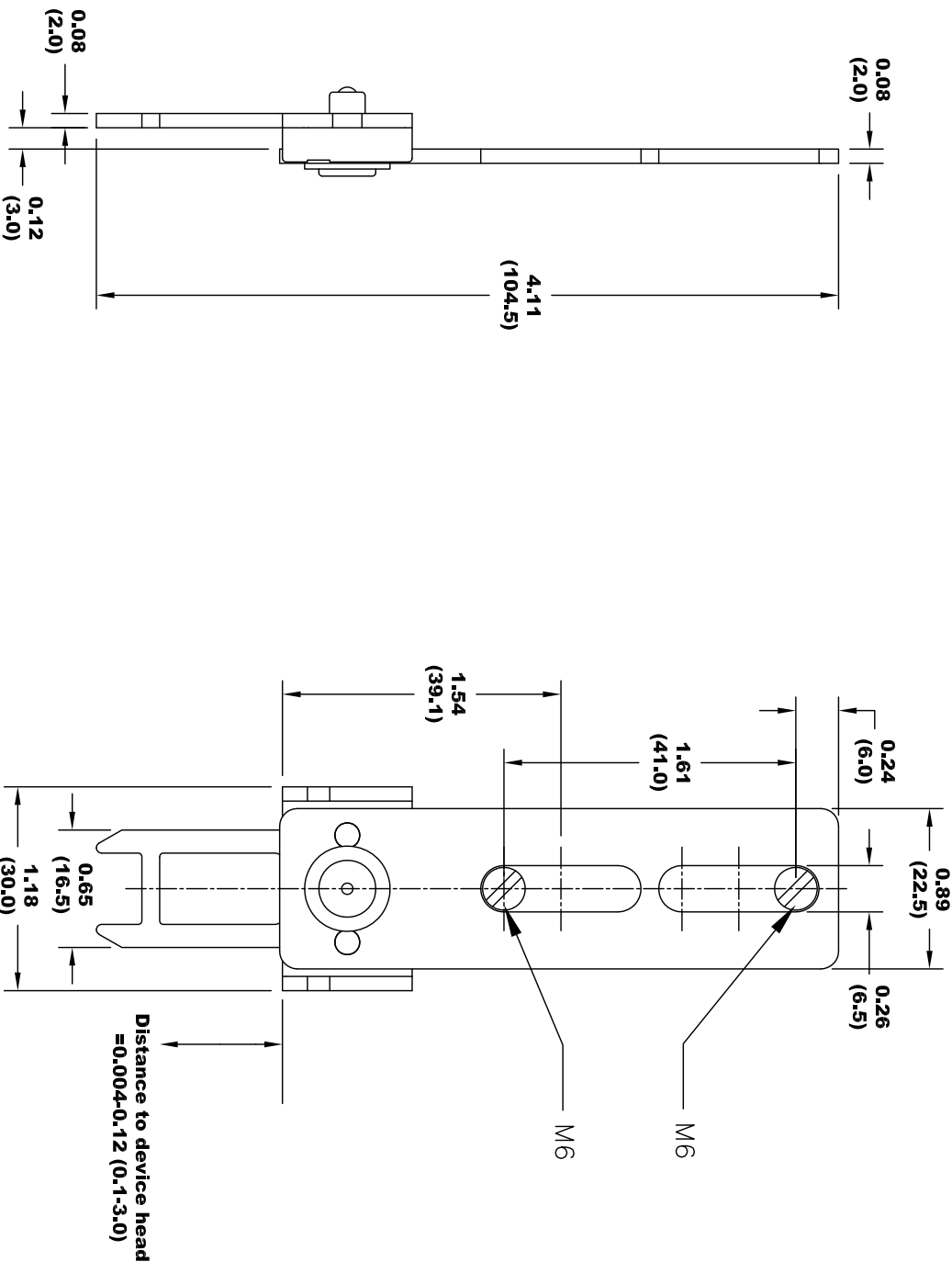



LS-XFG-ZBZ



							UNLESS OTHERWISE SPECIFIED DIMENSIONS ARE IN INCHES TOLERANCES ARE:			DWN H. WEYMOUTH			ETON 6500 HARBOUR HT'S PKWY SUITE 320 WA 98275 (425) 349-5240			
							DECIMAL:		ANGULAR:		DATE 10/08/2011			Safety Position Switch		
							XX ± .01		∠ ± 30°		CHK ---			Even, Flexible		
							XXX ± .005				ENG ---			Coasting Actuator		
							.XXX ± .001				MFG ---					
							MATL:				OTHER ---					
							FINISH:				OTHER ---			SIZE DRAWING NO. A 90-26805-011		
							SCALE:		SHT 1 OF 1					REV 01		
							<input checked="" type="checkbox"/> = CRITICAL DIMENSION TO BE INSPECTED							AutoCAD		
																
							THIRD ANGLE PROJECTION									
									</							